

For Lease

Professional Office Space Available

900 N. Tyler Rd. Wichita, KS

PROPERTY FEATURES

- ✓ Landlord agrees to pay taxes, insurance, trash, and water bills.
- ✓ Premier office location.
- ✓ Within close proximity to many national tenants and local schools.
- ✓ Building Co-tenants: Oxler Family Dentistry and Strata.
- ✓ 21,450 Vehicles a day at Central and Tyler.
- ✓ Doorside parking.



LEASE INFORMATION

Building Size	2,500 SF
Lease Type	Modified Gross
Lease Rate	\$11.00/SF/YR

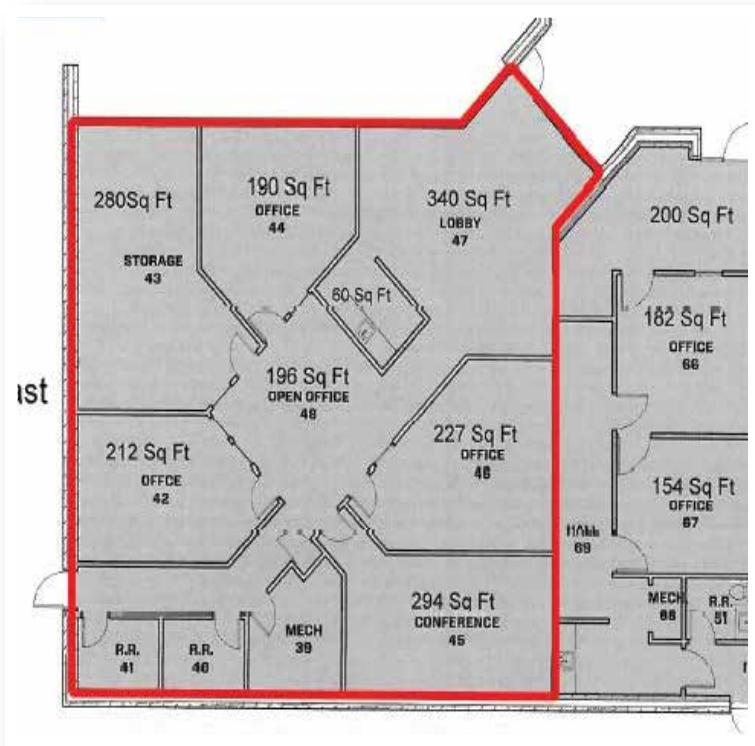
CONTACT INFORMATION

Carl Hebert, CCIM → 316-618-1100
→ CJHebert@InSiteRE.com

Like/Follow us!



InSite
REAL • ESTATE • GROUP



AREA NEIGHBORS

- Four Regional and National Banks
- O'Reilly Auto Parts
- Ace Hardware
- National Fast Food Chains
- Local Restaurants
- Westlink Public Library
- Local Churches
- West Wichta Family Physicians
- Minor Care Center
- Genesis Health Club
- and Many More!

Like/Follow us!



SITE

28,099 Households
71,721 Population
Within 3 Miles



North Tyler Rd

Westlink Public Library

St Francis Catholic School

West Wichita Family Physicians and Minor Care

West Central Ave

Bishop Carroll Catholic High School

OFFERED BY

Carl Hebert, CCIM 316.618.1100
cjhebert@insitere.com InSiteRe.com

InSite
REAL ESTATE GROUP